



# Wessex Research Group Network *Newsletter*

VOLUME 5, ISSUE 2.

February 2010

The February edition of the Wessex Network newsletter contains articles by Anne Donelan (Cancer Looking Beyond the Orthodox Approach), David Ash (The New Physics of Consciousness) and Peter Knight (Silbury Hill). There is also a full list of events scheduled for the month ahead.

The latest addition to the on-line digital lecture archive is Glastonbury as a Prehistoric Observatory by Nicholas Mann. Riding the Swan to 2012 (Part 3) by Shirley Laflin is the latest addition the on-line literary archive.

Material first broadcast on the Fusion radio show [www.soundofthevibe.webs.com](http://www.soundofthevibe.webs.com) can be found on the Wessex Network Video Archive located at [www.youtube.com/wessexresearchgroup](http://www.youtube.com/wessexresearchgroup). The latest broadcast is called "Our Cosmic Heritage: The Evolution of Form, Freewill and Consciousness."

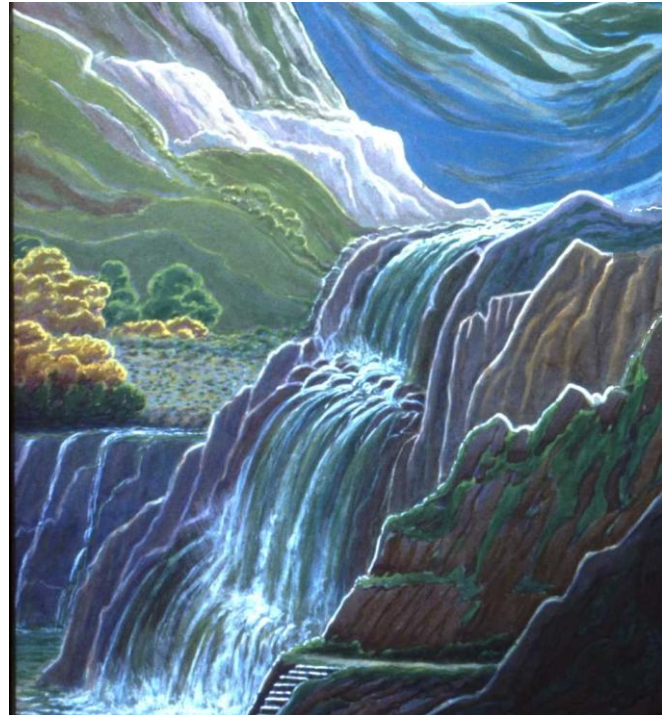
## **Cancer: Looking Beyond the Orthodox Approach**

by Anne Donelan

Many of us are having to come to terms with a frightening diagnosis of cancer these days, but once we can think clearly about it, we must surely be asking some big questions such as; 'What are the underlying causes in my case'? And 'Do I not need to try and get rid of these causes so that my body can heal at a much deeper level? What are the implications of receiving treatment designed to cope with the 'end-product', with little regard for the long-term process that has been going on and ended up manifesting as cancer'?

Many medical clinics in the States and a few in Europe, plus some integrated medicine doctors in this country are adopting this approach. They would be looking at many factors caused in part by the environmental and other toxins we have stockpiled, and our bodies haven't been able to detoxify. For example, 'What has prevented our Phase 1 and 2 Liver Detox Pathways from functioning as they should'? And why haven't our immune systems been able to recognise the cancer in its early stages and deal with it? So many factors in today's world could be causing RNA/DNA not to replicate correctly, and all these need to be looked at.

On the hopeful side, it is most encouraging to look on websites and find that thousands of people are now cancer-free, sometimes even those who had been diagnosed with Stage 4 cancers and given up by their doctors. Isn't it worth looking at such cases in great detail and investigate how people have been able to heal themselves?



It is salutary to learn that even Candida can be a major problem, causing our cells to be operating from a sugary/yeasty mode instead of an oxygen-based one. Oxygen is one of the vital 'ingredients' for prevention and healing and German private clinics have been using Ozone therapy for many years, along with other treatment interventions. Some state hospitals in the UK are using such treatments after cancer operations in the hope of clearing cancer cells still in the patient's system.

It gives us grounds for great hope and encouragement to know that so many doctors have been so wonderfully guided to this more holistic approach to healing the body. It can be costly, but sometimes there are reasonable solutions too. A starting point might be too look at Cancer Free websites!

The treatment journey begins with self empowerment; in first facing up to cancer and believing that we can find a way through it all. We must never allow ourselves to be disempowered on what for many proves to be a daunting journey of courage and resolve. I am always happy to support this process through giving talks about this subject the complementary/alternative medical approaches, and what we can do ourselves to detoxify and avoid some of the nutritional and environmental toxins that are ubiquitous in today's world. For further information about the work of Anne Donelan, telephone her on 01305 251869 or alternatively email Anne at [annedonelan@yahoo.co.uk](mailto:annedonelan@yahoo.co.uk)

Sherborne  
Jean 01963 220323

Frome WRG  
Marina 01373 466391

Totnes  
Jeffrey 01803 868744

Weymouth & Dorchester  
Roma 01305 816644

Yeovil Psychic Society  
[www.yeovilpsychics.org.uk](http://www.yeovilpsychics.org.uk)

Dorset Earth Mysteries  
Group  
[www.dorsetmysteries.org](http://www.dorsetmysteries.org)

School of Energy  
Healing Educational Trust  
[www.energyhealing.co.uk](http://www.energyhealing.co.uk)

New Dimensions  
Group Bristol  
Lea 01225 722963

Bristol Dowzers  
Lea 01225 722963

Joyous Isle workshops  
[www.joyousisle.com](http://www.joyousisle.com)  
[www.awarenesscentre.org.uk](http://www.awarenesscentre.org.uk)  
[www.stoneseeker.net](http://www.stoneseeker.net)

[www.dragonseeker.co.uk](http://www.dragonseeker.co.uk)

Centre for Pure Sound  
Tel. 01935 389655  
[www.londonearth.com](http://www.londonearth.com)

The Martinsey Isle Trust  
[www.martinsey.org.uk](http://www.martinsey.org.uk)

Natures Way, Exmoor  
Tel. 01984 640147

Hawkwood College  
[hawkwoodcollege.co.uk](http://hawkwoodcollege.co.uk)

Taunton Pagan Moot  
Tel. 01823 283742

[www.avalonrising.co.uk](http://www.avalonrising.co.uk)

[www.angellight.co.uk](http://www.angellight.co.uk)

Taunton Association for  
Psychodynamics (TAP)  
Tel. 01823 665798

[www.wccsg.com](http://www.wccsg.com)

[www.innerpotential.org](http://www.innerpotential.org)

[www.wrekinforum.org](http://www.wrekinforum.org)

[www.goldenageproject.org.uk](http://www.goldenageproject.org.uk)

Theosophical Society in  
Scotland

## EVENTS

**Swindon** 6 Feb  
Mystic and Holistic Fayre  
<http://universaleyewebs.com>

**Penzance** 6 Feb  
Wrekin Forum Round Table  
Tel. Janice 01452 840033

**Falmouth** 6-7 Feb  
Imbolc Mystic Fayre  
[www.mysticfayre.co.uk](http://www.mysticfayre.co.uk)

**Bath** 20-21 Feb  
Convention of the Alternative  
Research Community  
[www.arconvention.com](http://www.arconvention.com)

**Wimborne** 26-28 Feb  
Conversations Retreat  
Gaunts House  
Tel. 01202 841522

**Bexhill on Sea** 27 Feb  
Wrekin Forum Round Table  
Tel. Marie 01424 214327

**Glastonbury** 27-28 Feb  
Mystic and Earth Spirit Fayre  
[www.glastonburyfayres.co.uk](http://www.glastonburyfayres.co.uk)

**Tadley** 28 Feb  
Spring Psychic Fayre  
[www.equilibriumcentre.net](http://www.equilibriumcentre.net)

## TALKS

**Bournemouth PLG** 1 Feb  
2012 and Beyond  
Diana Cooper  
Tel. Sue 01202 581898

**Frome** 3 Feb  
Alchemy by Night. The  
Confessions of an Alchemist  
Paul Cowlan  
Tel. Marina 01373 466391

**Glastonbury PLG** 3 Feb  
Love, Sex and Presence in  
Relationships  
Andy Portman  
Tel. 01458 833128

**Yeovil** 3 Feb  
Clairvoyance  
Brian  
Tel. Colleen 01935 477756

**DEMG at Stapehill** 4 Feb  
the Knights Templar  
Keith Craddock  
Tel. Dave 07977 144147

**Bath** 7 Feb  
Garden of Awen  
Bath's Ecobardic Showcase  
[www.chapelarts.org](http://www.chapelarts.org)

**London (TS)** 7 Feb  
the Arc of the Covenant  
Alan Edgar  
Tel. 0207 563 9815

**Salisbury** 8 Feb  
Demonstration of  
Transfiguration Mediumship  
Peter Steedman  
Tel. 0800 977 4767

**Taunton** 8 Feb  
Isis from Egypt to the Present Day  
Levannah Morgan  
Tel. Yarrow 07974 649794

**Bournemouth PLG** 8 Feb  
Ratu Bagus Bio Energy Shaking  
Meditation  
Kamini Hola  
Tel. Sue 01202 581898

**Wokingham** 9 Feb  
Resonate Your Dreams  
Nikki Slade  
[hello@inspired-events.com](mailto:hello@inspired-events.com)

**London (LEMC)** 9 Feb  
the Tarot and its Templar and  
Freemasonic Connections  
Beverly Frost  
[lemc@ic24.net](mailto:lemc@ic24.net)

**Weymouth &  
Dorchester** 10 Feb  
Supporting the Peace  
Initiative in Israel & Palestine  
Barbara Cohen  
Tel. Roma 01305 816644

**Glastonbury PLG** 10 Feb  
the Goddess in Glastonbury  
Kathy Jones  
Tel. 01458 833128

**Roadwater** 11 Feb  
Crystal Skulls  
Gillian Ellis  
Tel. Edward 01984 640147

**London (TS)** 14 Feb  
Patterns of Eternity. Sacred  
Geometry and the Starcut  
Diagram  
Malcolm Stewart  
Tel. 0207 563 9815

**Woodshaw** 15 Feb  
Frozen Tombs of Siberia  
(Ancient peoples of the Altai,  
including the Ice Princess)  
Kenneth Lymer  
[wds@wyverndowsing.freeserve.co.uk](mailto:wds@wyverndowsing.freeserve.co.uk)

**Bath** 15 Feb  
Bath Story Telling Circle  
Tel. David 01225 482170

**Bournemouth PLG** 15 Feb  
Matrix Re-Printing  
Sasha Allenby  
Tel. Sue 01202 581898

**Glastonbury** 16 Feb  
Pagan Discussion Group and  
Forum. Tel. 01458 835518

**Glastonbury PLG** 17 Feb  
Messages from Extra Terrestrials  
and Light Beings. Ascension and  
2012. Free Spirit  
Tel. 01458 833128

**Yeovil** 17 Feb  
the Power of Colour  
Sharon May  
Tel. Colleen 01935 477756

**Bradford on Avon** 17 Feb  
Journeys Within. Shamanic  
Techniques for Everyday Life  
[embraceyourself@ymail.com](mailto:embraceyourself@ymail.com)

**London** 18 Feb  
Sacred Sound and the  
Transformation of Space  
Christian Kyriacou  
Tel. 0870 766 9657

**Bristol** 19 Feb  
Be Your Own Guru. The  
Development of Spiritual  
Consciousness  
Prof. Peter Stewart  
Tel. Lea 01225 722963

**Beaconsfield** 21 Feb  
Remote Viewing  
David Barry  
Tel. Susan 01494 813214

**Bristol** 21 Feb  
Heal Your Life with Metatronic  
Healing  
Pippa Merivale  
Tel. Lea 01225 722963

**London (TS)** 21 Feb  
A Positive Approach to Religious  
Diversity  
Robert Woolley  
Tel. 0207 563 9815

**Sherborne** 22 Feb  
Our Journey of Ascension  
Chris Bourne  
Tel. Jean 01963 220323

**Bournemouth PLG** 22 Feb  
Birth Death and Beyond  
Carmella B'hain  
Tel. Sue 01202 581898

**London (LEMC)** 23 Feb  
London's Ghost Lore  
Scott Wood  
[lemc@ic24.net](mailto:lemc@ic24.net)

**London (CPS)** 23 Feb  
Psychic Secrets  
David Wells  
Tel. 0207 5893292

**Glastonbury PLG** 24 Feb  
Your Life, Your Mirror - How to love  
your life and know that life loves  
you back!  
Natalie Fee  
Tel. 01458 833128

**Dorchester** 24 Feb  
Meeting of the Pagan Moot  
Tel. 01305 251646

**London (Forum)** 25 Feb  
the Wessex Astrum. Sacred  
Geometry in a Mystical  
Landscape. Peter Knight  
Tel. 0208 6715417

**Taunton** 26 Feb  
the Challenge of Belonging: an  
Exploration of the Relationship  
between early pre and perinatal  
Wounding and Spiritual Wellbeing  
Maura Sills  
Tel. Vanessa 01823 665798

**London (RILKO) 26 Feb**  
Temples of Wisdom, incubation of light: music, trance states, colour and form from Egypt to Rosslyn Chapel  
Karen Rails  
Tel. Rob 0208 7629753

**London (TS) 28 Feb**  
Synchronicity: Unlocking Inner Potential  
Cynthia Trasi  
Tel. 0207 563 9815

**Totnes 28 Feb**  
the New Physics of Consciousness  
David Ash  
Tel. Jeffrey 01803 868744

## WORKSHOPS & COURSES

**Glastonbury 1 Feb**  
First Stirring. Celebrating the cycle of Nature  
Tel. 01458 835518

**Thakeham 3 Feb**  
Create a Personal Mandala  
Justine van de Weg  
[Justine@angeldivinity.com](mailto:Justine@angeldivinity.com)

**St Leonards 5-8 Feb**  
the Stirrings of Spring: A Shamanic Experience  
Lynn Gosney  
Tel. 01424 729518

**Sparkford 6 Feb**  
Meditative Journeys and Practice  
Andrew Smith  
Tel. 01963 440733

**Poole 6 Feb**  
Introduction to Dowsing  
Stephen Coburn  
Tel. 01202 674636

**London (CPS) 6-7 Feb**  
Healing in Hospitals  
Angela and Graham Buxton King  
Tel. 0207 5893292

**Tadley 6-7 Feb**  
Clean NLP  
Angela Watson  
Tel. 01202 674636

**Chippenham 7 Feb**  
Meditation  
John Gloster Smith  
Tel. 01249 813188

**Poole 9 Feb**  
Exploring the Art of Dying or, are you Dying to Know More?  
Valery Coburn  
Tel. 01202 674636

**Glastonbury 10-12 Feb**  
Coaching for Spiritual Facilitators  
Openhand Foundation  
Tel. 01458 830443

**Stoke Trister 12-14 Feb**  
Energy Awareness and Intuitive Massage  
Jan Trewartha & Claire Nicholls  
Tel. 07724 027748

**Wimborne 12-14 Feb**  
Tantric Philosophy  
Gaunts House  
Tel. 01202 841522

**Thakeham 12-14 Feb**  
Angelic Reiki I and II  
Justine van de Weg  
[Justine@angeldivinity.com](mailto:Justine@angeldivinity.com)

**Ilton 13 Feb**  
Reiki 1<sup>st</sup> Degree  
Tel. Margaret 01460 53699

**Cullompton 13-14 Feb**  
Enneagram Foundation Course Part 1  
Veronica & Chris Croft  
Tel. 01884 855759

**Ilton 14 Feb**  
Reiki 2<sup>nd</sup> Degree  
Tel. Margaret 01460 53699

**Glastonbury 14 Feb**  
Introducing Astrology  
Claudie Planche  
Tel. 01458 835506

**London (TS) 14 Feb**  
Becoming the Love in Your Life  
Cate MacKenzie  
Tel. 0207 563 9815

**Edinburgh 14 Feb**  
Sacred Magic  
Morag Cameron  
[christinebrian@totalise.co.uk](mailto:christinebrian@totalise.co.uk)

**Stroud 19-21 Feb**  
Qi Gong for all Seasons  
Barbara Brown  
Tel. 01453 759034

**Glastonbury 19-21 Feb**  
the Template. Sacred Geometry Activation  
Claudie Planche  
Tel. 01458 835506

**Stroud 19-21 Feb**  
Creating Health with Conscious Breathing  
David Beales and Johnathon Nunn  
Tel. 01453 759034

**Wimborne 20-21 Feb**  
NLP Master Practitioner Training  
Sarah Frossell  
Tel. 01202 841522

**Sparkford 21 Feb**  
the Discourses of Rakoczy  
Andrew Smith  
Tel. 01963 440733

**Thakeham 25 Feb**  
Angelic Landscapes (trees)  
Justine van de Weg  
[Justine@angeldivinity.com](mailto:Justine@angeldivinity.com)

**St Leonards 26 Feb**  
Advancing Your Mediumship  
Martin Twycross  
Tel. 01424 729518

**Glastonbury 26-28 Feb**  
the Flower of Life. Merkaba Meditation  
Claudie Planche  
Tel. 01458 835506

**Wimborne 26-28 Feb**  
Medicine Wheel Shamanic Workshop  
Denise Keirch  
Tel. 01202 841522

**Honiton 27 Feb**  
Psychic Surgery. How When Why?  
Peter Steedman  
Tel. 0800 977 4767

**Glastonbury 27-28 Feb**  
Sweet Track Spiritual Counselling Course II  
Collette Barnard, Sandra McKeever & Jax Allen  
Tel. 01458 835518

**Cardiff 27-28 Feb**  
Journey Intensive  
Debs  
Tel. 01656 890400

**Cullompton 27-28 Feb**  
Enneagram Foundation Course Part 2  
Veronica & Chris Croft  
Tel. 01884 855759

**Devizes 28 Feb**  
Past Life Regression  
Brigid Reilly  
Tel. 0800 977 4767

**London (TS) 28 Feb**  
Egyptian Magic and the Tarot  
Katy Butler  
Tel. 0207 563 9815

**Hator Dendora 28 Feb**  
Full Moon Sacred Site Ceremony  
Grand Mayan Itza Council  
[yokahmaya@hotmail.com](mailto:yokahmaya@hotmail.com)

**Sherborne 28 Feb**  
Overtone Circle  
Dean Carter  
Tel. Dean 01935 389655

## LIGHTWORKER GROUPS

**Global Meditation Event**  
1 Feb 9pm  
[www.networkoflight.org](http://www.networkoflight.org)

**Bournemouth Tues / Weds**  
Channelling & Meditation  
Tel. Gary 01202 418291

**Weymouth Weds (eves) / Friday (mornings)**  
Lightworker Development  
Tel. Tricia 01305 784348

**Bath Storytelling Circle.**  
Tel. 01225 334204

**the London Forum.**  
[www.londoncircles.net](http://www.londoncircles.net)

**Bournemouth PLG**  
[www.powerofpositiveliving.com](http://www.powerofpositiveliving.com)

[www.body-spirit.co.uk](http://www.body-spirit.co.uk)

[www.fire-in-the-head.co.uk](http://www.fire-in-the-head.co.uk)

[www.chalicewell.org.uk](http://www.chalicewell.org.uk)

[www.unicorncentre.co.uk](http://www.unicorncentre.co.uk)

**Mysticklight.com**

[www.thamesvalleydowsers.org.uk](http://www.thamesvalleydowsers.org.uk)

[www.libraryofavalon.org.uk](http://www.libraryofavalon.org.uk)

**Glastonbury PLG** [www.shiny-happy-people.co.uk](http://www.shiny-happy-people.co.uk)

[www.theosophical-society.org.uk](http://www.theosophical-society.org.uk)

[www.fisu.org/en](http://www.fisu.org/en)

[www.theantiquariansociety.com](http://www.theantiquariansociety.com)

[www.Loveandlight.co.uk](http://www.Loveandlight.co.uk)

[www.hospiceoftheheart.org](http://www.hospiceoftheheart.org)

[www.openhandweb.org](http://www.openhandweb.org)

[www.stargaia.com](http://www.stargaia.com)

[www.white-elk-woman.com](http://www.white-elk-woman.com)

[www.thehouseoflife.co.uk](http://www.thehouseoflife.co.uk)

**R.I.L.K.O.**  
<http://members.aol.com/rilko/>

[www.Psychic-Sanctum.co.uk](http://www.Psychic-Sanctum.co.uk)

[www.Enneagram-uk.com](http://www.Enneagram-uk.com)

[www.sacredconnections.co.uk](http://www.sacredconnections.co.uk)

[www.revolutionof2012.net](http://www.revolutionof2012.net)

[www.networkoflight.org](http://www.networkoflight.org)

[www.megalithictours.com](http://www.megalithictours.com)

[www.iamfoundation.co.uk](http://www.iamfoundation.co.uk)

[www.saahera-centre.org](http://www.saahera-centre.org)

[www.gaunts-house.com](http://www.gaunts-house.com)

[www.educationaid.net](http://www.educationaid.net)

**Sea Spirit Centre**  
<http://spiritual-courses.co.uk>

[www.collegeofpsychicstudies.co.uk](http://www.collegeofpsychicstudies.co.uk)

[www.wyverndowsing@freeserve.co.uk](http://www.wyverndowsing@freeserve.co.uk)

[www.brli.org](http://www.brli.org)

[www.kabbalahcentres.com](http://www.kabbalahcentres.com)

[www.insearchofthesacred.com](http://www.insearchofthesacred.com)

[www.valehealing.co.uk](http://www.valehealing.co.uk)

**Fountain Group**  
[embraceyourself@ymail.com](mailto:embraceyourself@ymail.com)

**Christchurch** Weds  
Lightworker Circle  
Tel. David 01202 429300

**Weymouth** Thurs  
Lightworker Circle  
Tel. David 01202 429300

**East Woodlands** 1, 15 Feb  
Healing from the Heart  
Tel. Marina 01373 466391

**Storrington** 5, 19 Feb  
Meditation Evening  
Justine van de Weg  
[Justine@angeldivinity.com](mailto:Justine@angeldivinity.com)

**Sherborne** 7 Feb  
Celtic Angels Spiritual

Development Group  
Marie  
Tel. 07967386715

**Sparkford** 21 Feb  
Meditative Journeys and Practice  
Andrew Smith  
Tel. 01963 440733

**Stoke Trister** 26 Feb  
Monthly Meditation  
Tel. 077599 42110

### SERVICES

**W. Mersea** 9, **Kelvedon** 23 Feb  
Spiritual Friends Service, Guest  
Medium, Healing, Workshop  
Tel. Carole 01621 869567

**Stoke Trister** 28 Feb  
Interfaith Service  
Mary Adams & Sarah Cox  
Tel. 077599 42110

### TRIPS, TOURS & VISITS

**Lake District**  
**Weekend** 6-7 Feb  
Megalithic Tours  
Tel. Neil 01772 728181

**Anglesey Mystical**  
**Island** 20-21 Feb  
Megalithic Tours  
Tel. Neil 01772 728181

**Woodshaw** 21 Feb  
Liegh, Southcote and South  
Cerne Churches  
[wds@wyverndowsing.freeserve.co.uk](mailto:wds@wyverndowsing.freeserve.co.uk)

**Dartmoor** 27 Feb  
Dartmoor Dowsing  
Aaron Bray  
Tel. 07973120244

**Mysterious North Wales & the Arthurian & Grail Connection** 27-28 Feb  
Megalithic Tours  
Tel. Neil 01772 728181

## The New Physics of Consciousness

by David Ash

The idea of the universe as a mind, a great ocean of thought and consciousness has been presented by many great thinkers. The renaissance for example was a time when humanity was infused with ideas and we saw many great artists who were also great scientists and scientists who were great artists emerge. Was this because they saw everything as one, perceiving Universal Consciousness as God or some creative source? Were they by default part of God in a human form?

We are all aspects of this consciousness so when we hurt someone else we hurt ourselves. When we love and serve others we love and serve ourselves. All this is grounded in a science that encompasses spiritual truths, which if we could expand our consciousness to grasp would reveal a new physics that is so straightforward that everyone can understand and enjoy. Connection with these higher dimensions provides an easy account in science for life after death and the spiritual realms. Concepts of soul and spirit fit in to this amazing new physics and Angels, crop circles, homeopathy, acupuncture, miracles and manifestations are seen as a higher level of science, explained clearly and simply along the life field, physic surgery and ascension.

Yogis in Ancient India probed the atom with their minds and saw "the smallest particles of matter as vortices of energy." Imagining atoms as material particles the ancient Greeks invented materialism. Seeing the vortex the Yogis realised *maya*; the illusion of material. The vortex has explained the whole of physics in terms of a single principle and led me to predict the greatest astronomical discovery of our time. A new proven physics based on Indian Mysticism reconciling science and spirituality. At a time when we are about to take the greatest leap in consciousness imaginable we must consider that all our beliefs about everything in science and religion will change. David Ash will be talking about the New Physics of Consciousness in Totnes during February. He can be contacted by emailing [davidash333@btinternet.com](mailto:davidash333@btinternet.com)

## Silbury Hill

by Peter Knight

In a valley immediately north of West Kennet stands Silbury Hill, the area's jewel in the crown, and Europe's largest prehistoric mound, which rises majestically out of the land, having stood the test of time for some 5,000 years.

It was built around 2,700 BC stands 130ft high and was constructed using an incredible 12 million cubic feet of chalk and earth. It is a true pyramid, built using cleverly interlocking blocks of chalk, arranged in steps 15-17ft deep, ensuring that the hill has not slumped in over 4,500 years! Recent geophysical work has shown that steps gradually spiral to the summit, enabling a processional way to the top.

Excavations in 1968-1970 tunnelled to the centre of Silbury and found grass that was still green and insect remains including flying ants. These told archaeologists that the structure was commenced in August, around the time of the Lughnassadh/Lammas festival.

One feature of Silbury Hill is a ledge about 15ft below the summit. The importance of this ledge is that when Silbury Hill is viewed from several of the other sacred sites in the area, the distant skyline coincides exactly with it. This required incredible engineering know how, to position the hill, to determine the height of it so as to make possible such subtle line-of-site effects. Devereux suggests that it is Silbury, with its intervisibility with these other sites, and not the main hub at Avebury which was the hub of the ceremonial landscape. The symbolism of the hill is obvious and dramatic, the pregnant tummy of the Earth Mother rising from the land. The hill was not a burial mound, but a lasting epitaph to the Goddess, to whom the builders of Silbury had such a close affiliation. The St Michael line also passes through Silbury Hill. As at West Kennet it is the female Mary current that is present, here spiralling around the hill. For further information about Silbury Hill and the work of Peter Knight log on to [www.stoneseeker.net](http://www.stoneseeker.net)

To promote an event or submit a contribution to the newsletter email Robert Mulliss at [rmulliss@talktalk.net](mailto:rmulliss@talktalk.net) or log on to [www.wessexresearchgroup.org](http://www.wessexresearchgroup.org)